

STRESSHIELD™

THE FIRST LINE OF DEFENSE IN LOSS CIRCULATION MANAGEMENT

STRESSHIELD™ uses a custom blend of organic and recycled synthetic particles, engineered within a precise PSD range that delivers optimum well bore strengthening characteristics while minimizing fluid invasion into micro-fractures and permeable formations. The result is a stronger more stable well bore with little or no loss of fluid.

The synthetic particles give STRESSHIELD™ a high-strength capacity with minimal degradation. The strengthening aspect continues long after the fracture is sealed and drilling has resumed.

STRESSHIELD™ is treated with a triglyceride graphite solution to make it compatible in all fluids.

STRESSHIELD™ Advantages

- ◆ Pre-treated for easy mixing into any mud system
- ◆ Low impact on fluid rheology
- ◆ Can be mixed with conventional rig equipment
- ◆ Aids in the prevention of differential sticking, sloughing, washouts and well bore collapse
- ◆ Minimizes induced loss of drilling fluid
- ◆ Minimizes induced fluid loss
- ◆ Will not plug MWD or mud motors at recommended treatment rates
- ◆ No effect on LC₅₀ of fluid system

Physical Properties

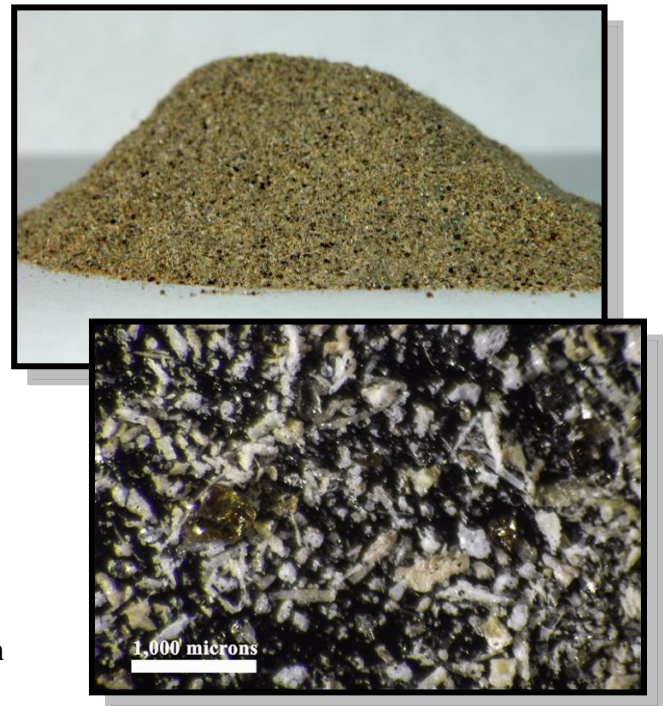
- ◆ Light gray/tan blended powder with golden and black particles
- ◆ PSD < 300μ

Application and Mixing Procedures

- ◆ STRESSHIELD™ is used as a preventative treatment in weak formations, sealing the formation before losses begin
- ◆ Pre-treatment 4-6 ppb
- ◆ Seepage to minor losses 10-25 ppb

Packaging

- ◆ STRESSHIELD™ is available in 25 pound sacks/48 sacks per pallet



SUN...The HOLE Solution Company!
USA Toll Free 1.800.962.6490
Canada 403.319.0677
www.SunDrilling.com
Solutions@SunDrilling.com